



PEOPLE HELPING PEOPLE

Inside Amway ESAN's Product Donation Process

At Amway, we combine products, resources, and operations with our values to make a positive impact worldwide. Each month, surplus items in Europe, South Africa, Australia, and New Zealand (ESAN) are donated to support local communities.



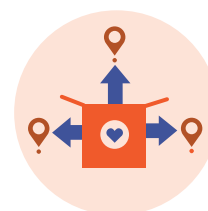
Monthly analysis of inventory across ESAN Warehouses



Transportation to established partners near our warehouses



Receipt by food banks/NGOs



Distribution of products to soup kitchens, families, and/or institutions

+162,000

Amway products donated in 2024*

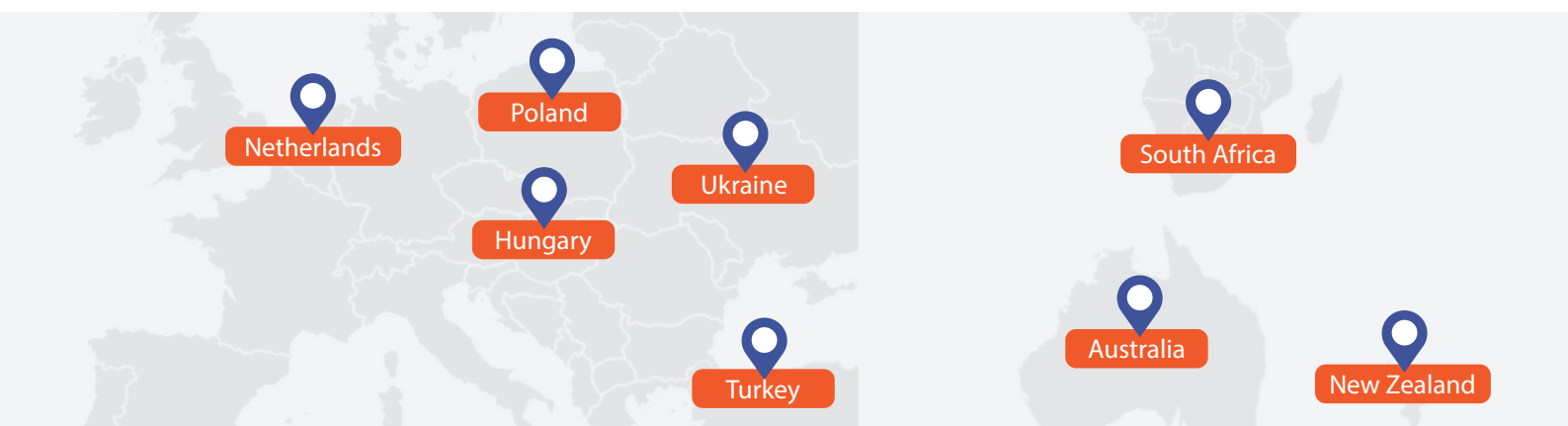
+8 partnerships

with food banks and NGOs across ESAN

+3.5 million €

donations worth at retail value**

*From January 1 to December 31, 2024; **Donations valued approximately at retail price, including VAT.



Regular partnerships with:

